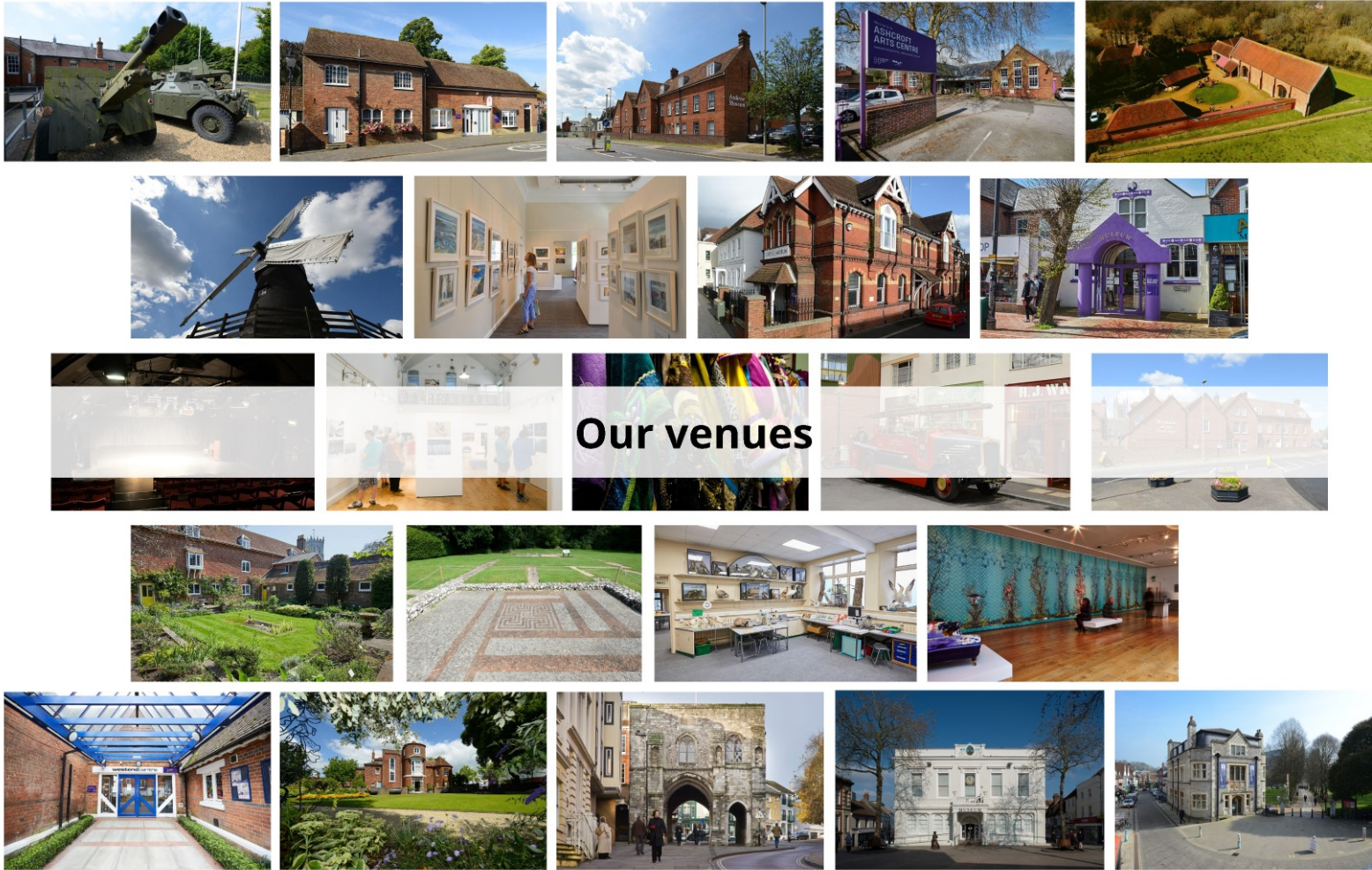


**FBC Leisure and Community Scrutiny Panel
6 March 2019**



4 years in...







MuseumSheffield



York Museums Trust





200 temporary exhibitions since 2014

Investment in venues



£4,087,079



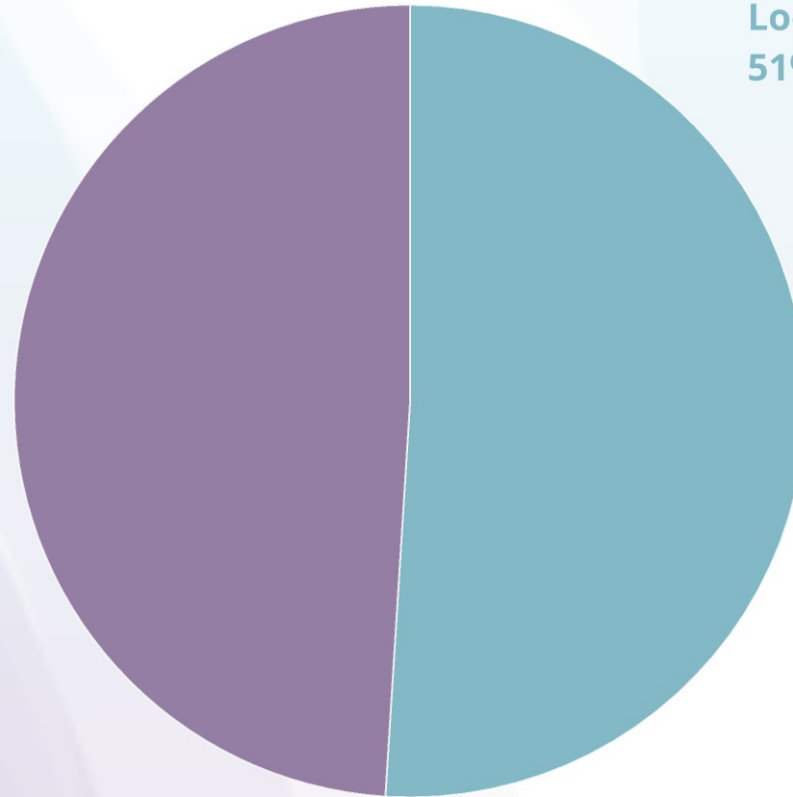
Fundraised income since 2014

Social impact

29,600 participants in 4 years



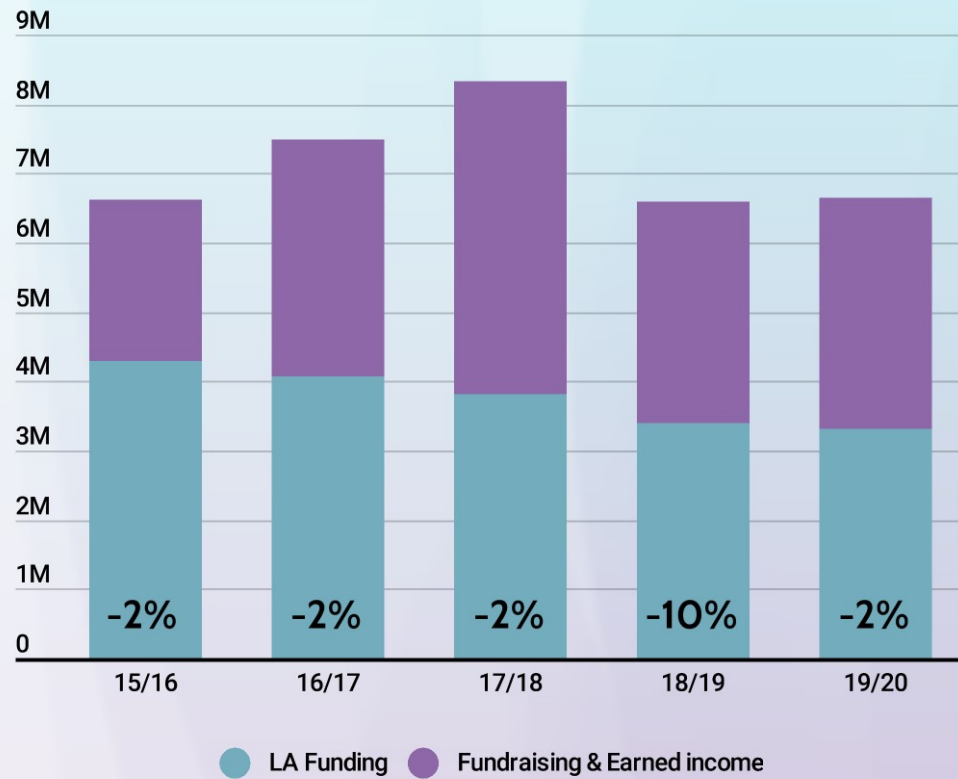
Turnover £6.6m



Local authority income
51%



Earned and
voluntary income
49%



-£700,000
LA funding

Turnover fluctuates due to restricted funding for specific one-off projects

Earned income

Year on Year comparison	15-16	17-18	+/-
Visitors	466,134	467,182	0%
Admissions	£638,950	£732,605	+ 15 %
Retail income	£213,110	£270,308	+ 27 %
Food & beverage	£332,657	£429,260	+ 29 %
Box office	£241,197	£333,736	+ 38 %
Workshops & schools	£253,720	£309,368	+ 22%
Gift aid	£25,590	£67,397	+ 163%
Venue donations	£25,663	£109,178	+ 325%
Total earned income	£1,730,887	£2,251,852	+ 30%
Per head	£3.71	£4.82	+ £1.11

OPENING DOORS
TO CULTURE



 HAMPSHIRE
CULTURAL
TRUST

Building our charitable identity

Registered charity no. 1158583





2018 Highlights

Highlights and performance

- **Re-accreditation – all our museum venues have been officially endorsed as meeting the national standard**
- **Delivered a variety of school programmes to over 16,200 school children (2018-19 YTD)**
- **361,000 visitors figures in managed venues YTD, 2.3% behind budget for 2018-19 following one of the hottest summers on record**
- **Financially on target to hit budget with a small surplus by year end 2018-19**



Supported using public funding by
**ARTS COUNCIL
ENGLAND**

Digital Transformation

- **New websites (six) launched in June 2018**
- **Google Ads grant \$10,000/month**
- **EPOS rolled out to museum venues**
- **Online sales increased from 2% to 40%**





WESTBURY MANOR MUSEUM

Open today: 10:00am - 5:00pm

Home Visit | Westbury Manor Museum

Share this page

- OVERVIEW YOUR VISIT WHAT'S ON GALLERY TEAM SCHOOL VISITS CAFÉ AND SHOP

OUR WORK



WHAT'S ON

All That Jazz
19 January - 10 March 2019

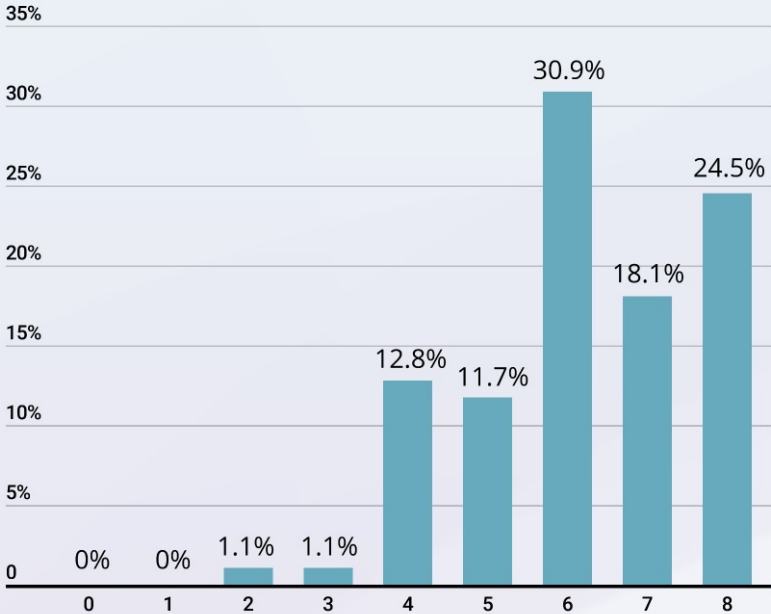
An Evening With...The Georgia
Ramblers Jazz Band
22 February 2019

Chocolate!
16 March - 04 May 2019

VIEW MORE EVENTS >

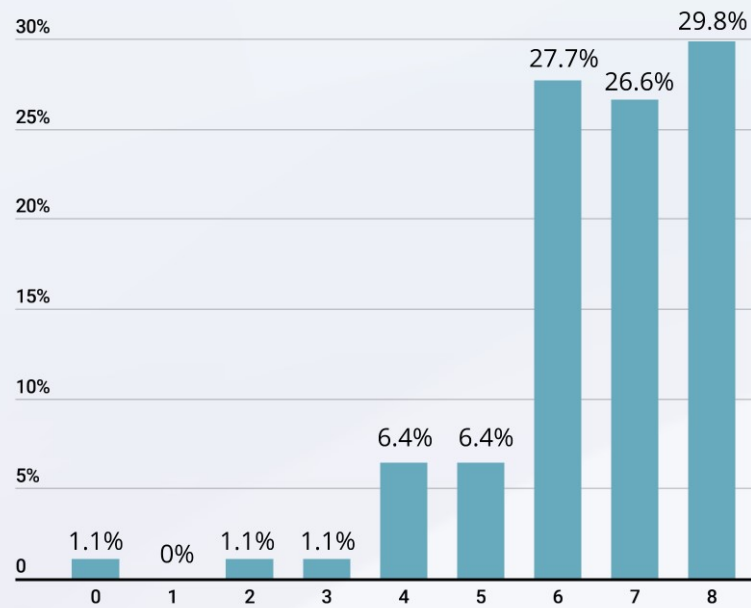


Staff survey Confidence in HCT



Staff survey

Pride in working for HCT



2018-19 Exhibition highlights



ALL THAT JAZZ
EXHIBITION: 19 JANUARY – 10 MARCH 2019

Discover the story of jazz and its impact on the local area in this free exhibition at Westbury Manor Museum, and enjoy live music and workshops at Westbury Manor and Ashurst Arts Centre.

LIVE MUSIC AND FAMILY WORKSHOPS AT WESTBURY MANOR

Chris Walker and his Quartet 25 January	Art Box Workshop 20 February
Family Fun @ Westbury 18 February	The George Ramblers Jazz Band 22 February

JAZZ AT ADHOCROFT ARTS CENTRE, OSBORN ROAD

Brian Williams 7 February	Flour de Paris 8 March	Steve Miller Quartet 23 March
Jazz Dance Workshop 8 March	PS Puckett Orchestra 14 March	Southampton Tota 6 April

Prices and booking details available online, visit www.hampshireculture.org.uk to find out more and to book.

Westbury Manor Museum: 84 West Street, Fareham PO16 8JJ
Ashurst Arts Centre: 100 Ashurst Road, Fareham PO16 8JJ

Hampshire County Council | Hampshire Culture | Hampshire Museums | Hampshire Archives



24 NOV 2018 – 12 JAN 2019

PUTTING ON A SHOW

WESTBURY MANOR
MUSEUM · CAFE · SHOP

Experience the magic of theatre from curtain-up to curtain-call in this free, family-friendly exhibition with puzzles to solve and things to try on, colour in and even smell!

Westbury Manor Museum
84 West Street | Fareham PO16 8JJ | 01329 822063
ADMISSION: Free, suggested donation £3.00

HAMPSHIRE CULTURAL TRUST

Hampshire County Council | Winchester City Council | FAREHAM Borough Council



2018-19 Event highlights



WESTBURY MANOR MUSEUM

Special Exhibition for Heritage Open Days

Fareham's Women's Suffrage Centenary Celebration Exhibition

This exhibition explores the background to the movement and the role local Fareham people played in the debates and protests; bringing to life some fascinating characters

6th to 15th September FREE



Location: 84 West St, Fareham, Hampshire PO16 8JJ
Opening times: Mon - Sat, 10am - 4pm. Open Sundays in Hampshire school holidays please see our website for details.
 01329 822043
 Hampshire County Council | Winchester District | FAREHAM Museum & Library
www.hampshireculturaltrust.org.uk/westbury-manor-museum **FREE ADMISSION**

WESTBURY MANOR MUSEUM

An Evening With....

The Georgia Ramblers Jazz Band



22nd February 7.30pm-9.30pm (doors open 7pm)

Come and enjoy this fantastic local band. No pop, no rock, just swinging jazz, the good old songs of yesteryear from ballads through to hot stomps.

Tickets £10 each. Book online at <https://www.ashcroft.org.uk/event/evening-georgia-ramblers-jazz-band> or call 01329 223100



Location: 84 West St, Fareham, Hampshire PO16 8JJ
Opening times: Mon-Fri (not Wed) 10am-5pm, Sat 10am-4pm

01329 822043

Hampshire County Council | Winchester District | FAREHAM Museum & Library

www.hampshireculturaltrust.org.uk

FREE ADMISSION

Café and shop development



Earned income - Westbury Manor

Year on Year comparison	15-16	16-17	17-18	18-19 YTD (to Jan 19)	LY YTD +/-
Visitors	16,348	13,646	16,388	15,980	+19%
Retail income	£4,550	£3,713	£6,027	£6,453	+24%
Food & beverage	£11,204	£13,255	£26,341	£27,438	+31%
Total earned income	£21,693	£18,786	£36,082	£35,872	+23%
Per head	£1.33	£1.38	£2.20	£2.24	+3%

Museum closed for refurbishment for
6 months in 2017

New Community Manager



Emma Banks



Social Impact

Social impact



Local demographic

- Significant increase in 60-74 year olds and 75+ in the next 5 years
- Life expectancy is significantly better than the national average
- Significantly higher proportion of pension age vs working age people in the rest of Hampshire
- More than half of the people 75+ live along increasing risk of social isolation and loneliness
- The area has a significantly higher instance of self-harm / injuries in young people than the national average

Volunteers

Over 3,700 volunteer hours up to Jan 2019

45 volunteers who perform a range of roles:

- Front of house
- Exhibitions and collections
- Events
- Public engagement



WESTBURY MANOR MUSEUM

INTERESTED IN VOLUNTEERING AT THE MUSEUM?

Join The Team

Can you spare some time to help our friendly team of volunteers welcome visitors, run our cafe, and keep our heritage accessible?

For more information just pop in or contact:
01209 822661 or email volunteers@westburymuseum.org.uk

Location: 10 West St, Farnham, Hampshire GU14 6JF
Opening times: Mon - Sat: 10am - 5pm. Open Sundays in Hampshire school holidays please see our website for details.

01209 822661

Westbury Manor Museum

Westbury Manor Museum

Westbury Manor Museum



Older people

Volunteer programme development

Partnerships with local agencies / schemes

Pilot programme:

- Shared reading
- Puzzle club
- Singing for the brain



WESTBURY MANOR MUSEUM



Coffee & Puzzle Club



Drop in between 12:30pm and 2pm every second Friday of the month for a coffee and chat in our Library at Westbury Manor.



During these times we will have a selection of our historic jigsaw puzzles available for people to enjoy completing too.



Initial dates: 11th Jan, 8th Feb and 8th March

Special Puzzle Club offer: buy any hot drink and cake for £4.00!



HAMPSHIRE CULTURAL TRUST

Location: 84 West St, Fareham, Hampshire PO16 0JJ
Opening times: Mon – Sat, 10am – 5pm. Open Sundays in Hampshire school holidays please see our website for details.

☎ 01329 822063

 Hampshire County Council  Winchester City Council  FAREHAM BOROUGH COUNCIL

www.hampshireculturaltrust.org.uk/westbury-manor-museum   **FREE ADMISSION**

Young people

ICE project: CAMHS, Y Services and FASS

Horizon 20:20: Putting on a show

Mayflower 2020



You are invited to attend a
Private View of
'Putting on a Show'
at Westbury Manor Museum
Friday 23rd November

1pm—2pm

Please join us for a chance to see the new exhibition and
celebrate the imaginative artwork created by young people tak-
ing part in the Horizon 20:20 More and Better project.

With special thanks to: The Bridge Education Centre, Eastleigh,
The Key Education Centre, Gosport and Woodlands Education
Centre, Havant.

Address: Westbury Manor Museum, West Street, Fareham PO16 0JJ

phf Paul Hamlyn
Foundation

HAMPSHIRE
CULTURAL
TRUST



Coming up

2019-20 Exhibition programme

Chocolate! – March to May

- Workshops and Talks programme
- Special Chocolate Afternoon Tea
- Chocolate and Coffee promotion in Café

Rachel Hudson – May to July

- Hands on Garden related activities

Surviving the Stone Age – July to September



2019-20 Events

Evening opening

- Live music
- Open mic nights

Outdoor events

- The Tempest

Supporting local events and initiatives

- Community stall at D Day event
- 999 event
- Fareham bygones event

